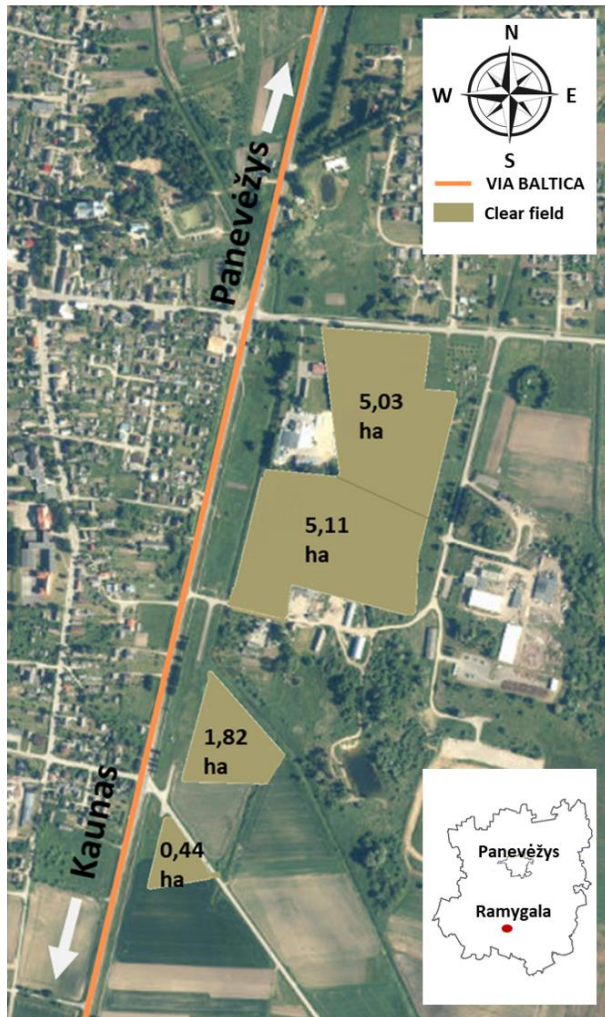


## 1.2. Land plots for business investments in Panevėžys district

In the Panevėžys district [town of Ramygala](#), Ramygala industry park of 12.4 ha area has been established. Required infrastructure has been set up in the park, a detailed plan has been provided, and the territory has been divided into

4 separate land plots. If the need arises – park territory development is possible. Industry park is next to transportation corridor – highway “Via Baltica”, the [Panevėžys city](#) is only 25 km away (0.5 h).



### LAND PLOTS, FORMED IN THE INDUSTRY PARK

Area in ha	Plot designation	Allowed storeys	Possible construction density
5,03	Industrial, warehousing and commercial designation	1-3 storeys (15 m)	73 per cent
5,11		1-3 storeys (15 m)	68 per cent
1,82		1-3 storeys (15 m)	32 per cent
0,44 (leased)		1 storeys (5 m)	22 per cent

### UP TO THE INDUSTRY PARK LIMITS THE FOLLOWING UTILITY NETWORKS HAVE BEEN CREATED

- Access roads;
- Water service, capacity not less than 100m<sup>3</sup>/d;
- Water waste service, capacity not less than 100m<sup>3</sup>/d;
- Surface water sewage systems;
- Overall electrical output of equipment 950 kW;
- Communications cable lines;
- Medium pressure gas pipeline, pressure in the endpoint not less than 2,5 bar; hourly gas debit Q h-2000m<sup>3</sup>/h;
- Drainage channels

*Roundabout A2 – A17, Panevėžys dist.*

